

# > Glow Gear Premium Coverall

The Glow Gear Coverall with Viz 360 technology is a revolutionary safety innovation offering wearers three levels of protection in low light and dark environments. For optimum fit and greater freedom of movement the coveralls are designed for both comfort and protection, remaining as unrestrictive as possible.

### Description :

YKK zip with stud fastener

Phosphorescent reflective tape

Two self-side swing pockets with access

Reinforced knees with waterproof knee pad pockets

Two rear bellow hip pockets with twin stud fastened flaps

Half elasticated cuffs with twin stud adjustment

Clock it system

Heavy duty studs throughout

Withstands up to 50 washes

Unisex garment

Conforms to EN20471 Class 3 RIS 3279, EN 13688 standards for high visibility clothing



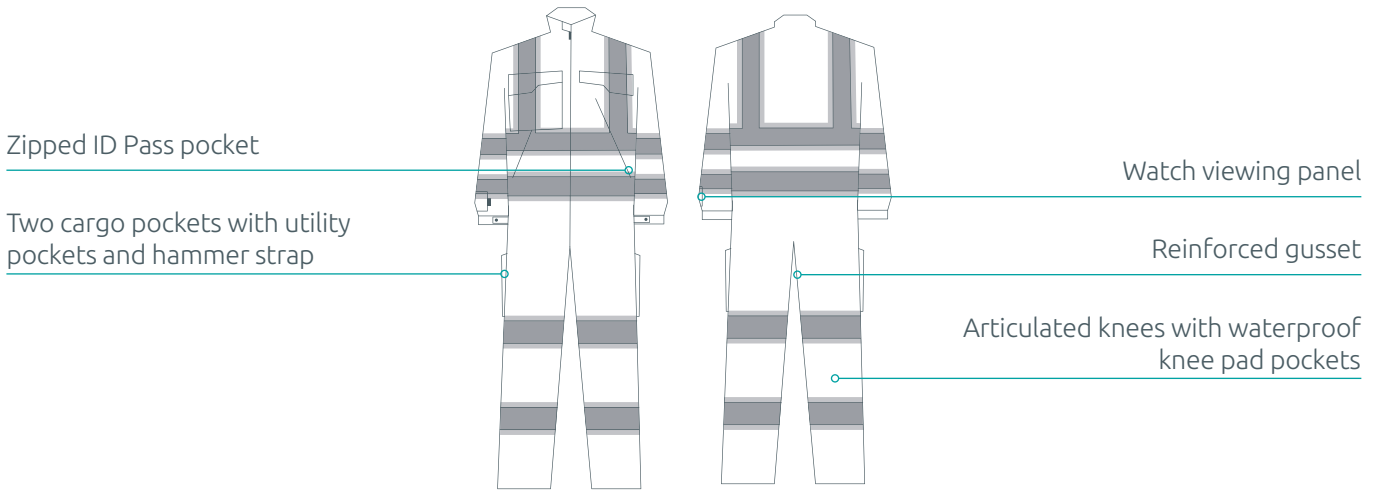
### Product Specification

<b>Colour</b>	High Visibility Orange	<b>Composition</b>	80/20 polycotton blend and durable fluorocarbon finish
<b>Product Code</b>	PCHVOBSTDT	<b>Weight</b>	280gsm

For further information please contact us on :

United Kingdom : 0121 5211 400 | [besafe@phs.co.uk](mailto:besafe@phs.co.uk) | [www.phsbesafe.co.uk](http://www.phsbesafe.co.uk)




# Glow Gear



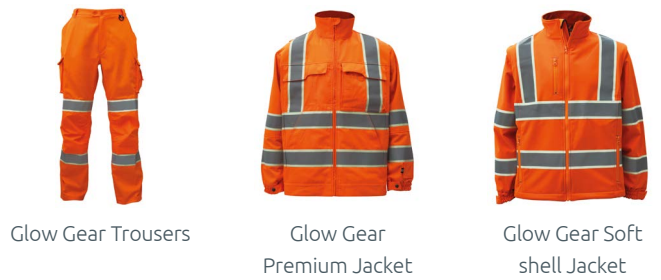
Size Chart								
Universal Size	XS	SML	MED	LRG	XL	2XL	3XL	4XL
Imperial Size	38	41	44	47	50	54	58	62
Metric Size	95	104	112	120	128	136	144	152
Inner Leg - Short	74	74	74	74	74	74	74	74
Inner Leg - Regular	79	79	79	79	79	79	79	79
Inner Leg - Tall	84	84	84	84	84	84	84	84

**Conformities**

EN20471, Class 3      GO/RT3279 / RIS-3279      phs Besafe Laundry Approved

Also available in the Glow Gear range :



For further information please contact us on :

United Kingdom : 0121 5211 400 | [besafe@phs.co.uk](mailto:besafe@phs.co.uk) | [www.phsbesafe.co.uk](http://www.phsbesafe.co.uk)

